



Camper & Nicholson's
YACHTING SINCE 1782
MARINAS
GRENADA
WEST INDIES



Grenada Sailing Festival

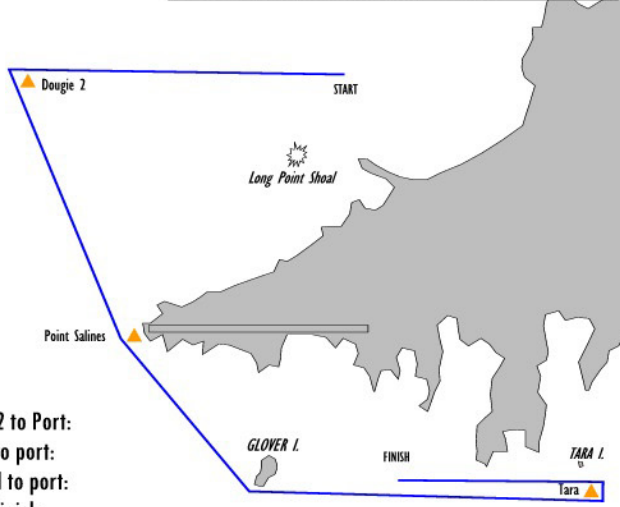
29 Jan - 2 Feb 2010 Pure Sail, Pure Spice

These course maps are for illustrative purposes only - NOT to be used for navigation

Multihull Courses Only

Starting Area Location:
Grand Anse Bay

Grenada Sailing Association
Course Multihull A
Grand Anse to South Coast



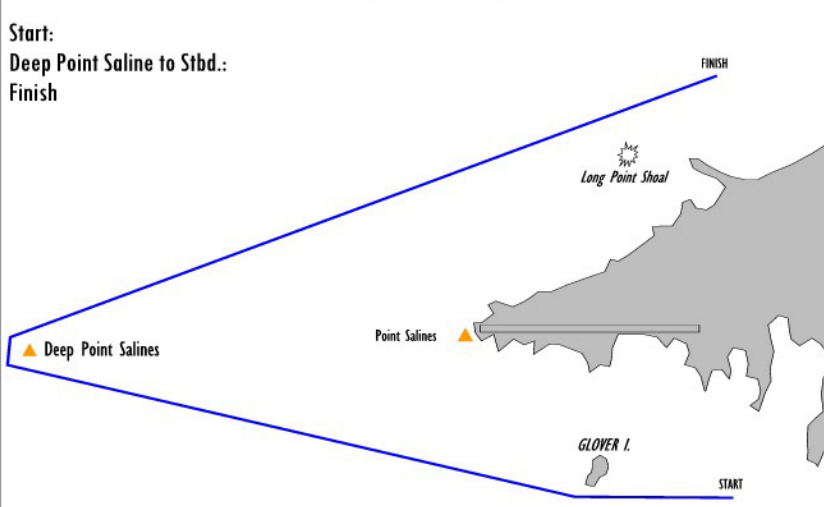
Start: Dougie 2 to Port:
Point Salines to port:
Glovers Island to port:
Tara to port: Finish.

The Porpoises

N.B. Long Point Shoal & the Porpoises shall rank as an obstruction.

Starting Area Location:
South of True Blue Bay
& East of Glover Island

Grenada Sailing Association
Course Multihull B
South Coast to Grand Anse

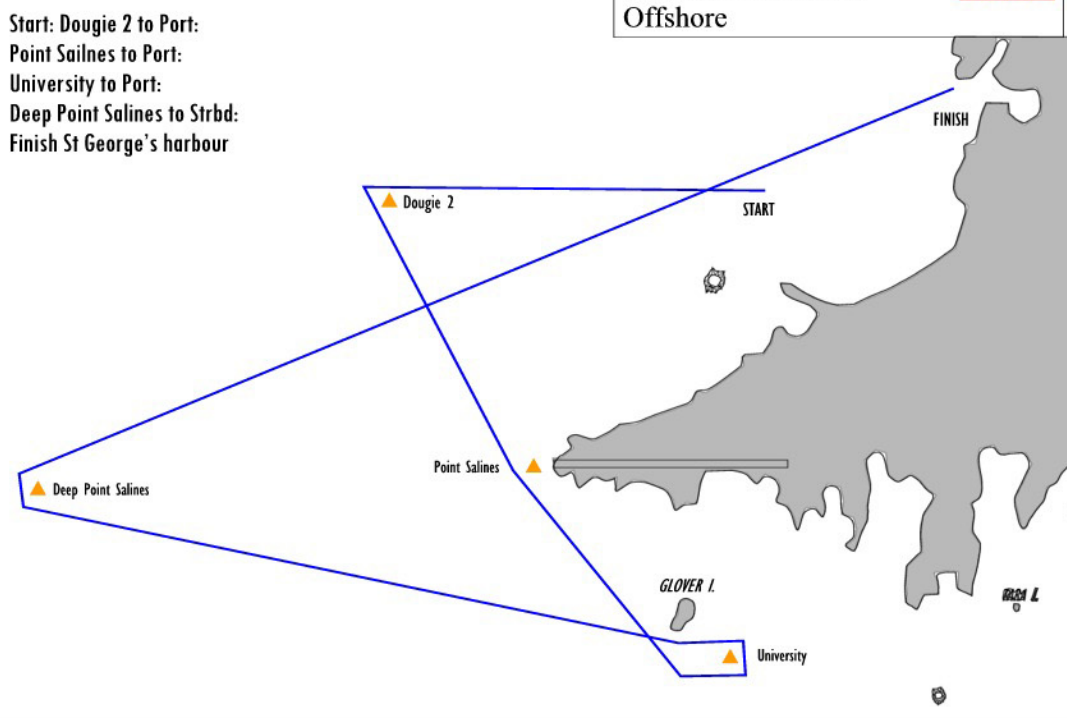


Start:
Deep Point Saline to Stbd.:
Finish

N.B. Long Point Shoal shall rank as an obstruction.

Starting Area Location: Grand Anse Bay

Grenada Sailing Association
Course Multihull C
Offshore



Start: Dougie 2 to Port:
Point Salines to Port:
University to Port:
Deep Point Salines to Strbd:
Finish St George's harbour